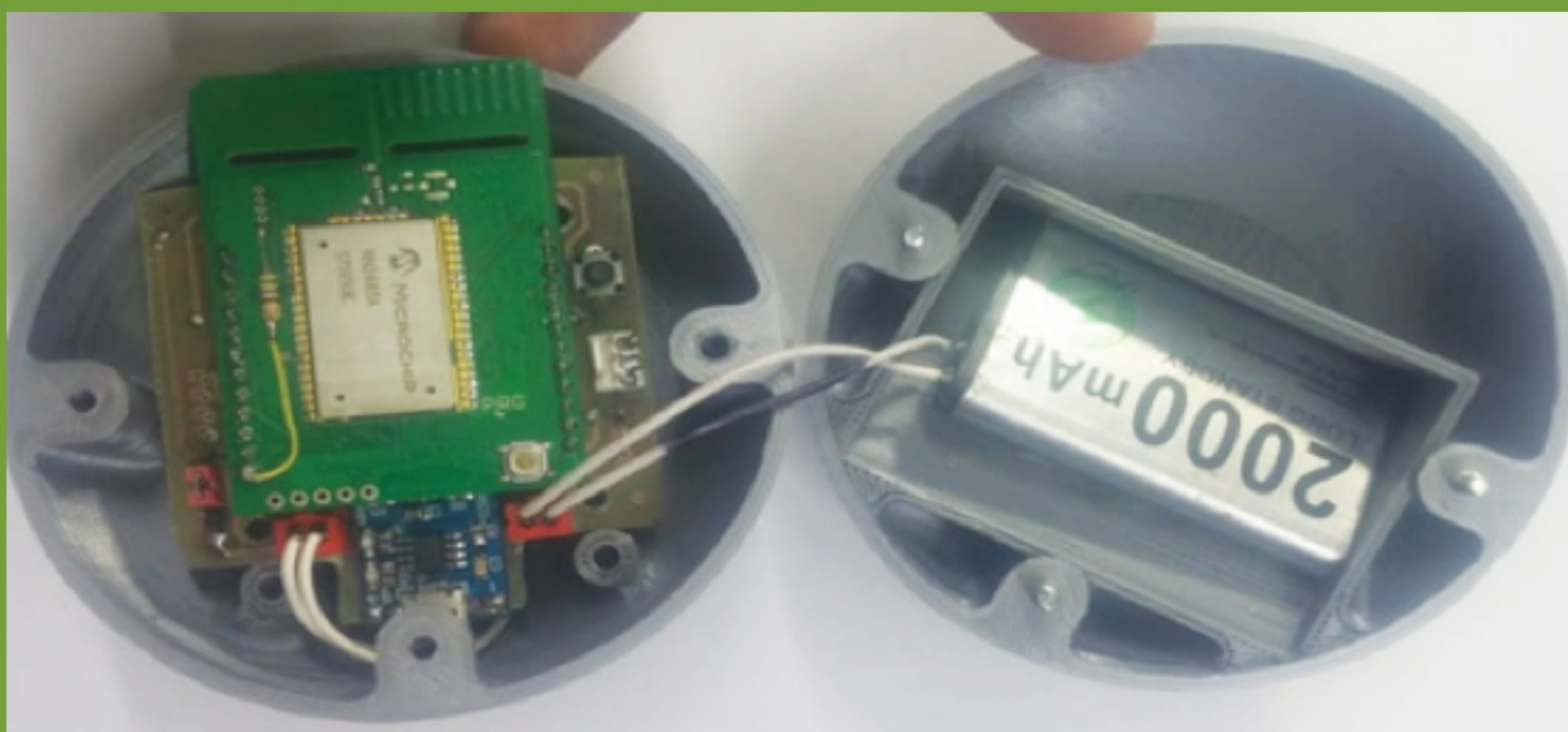


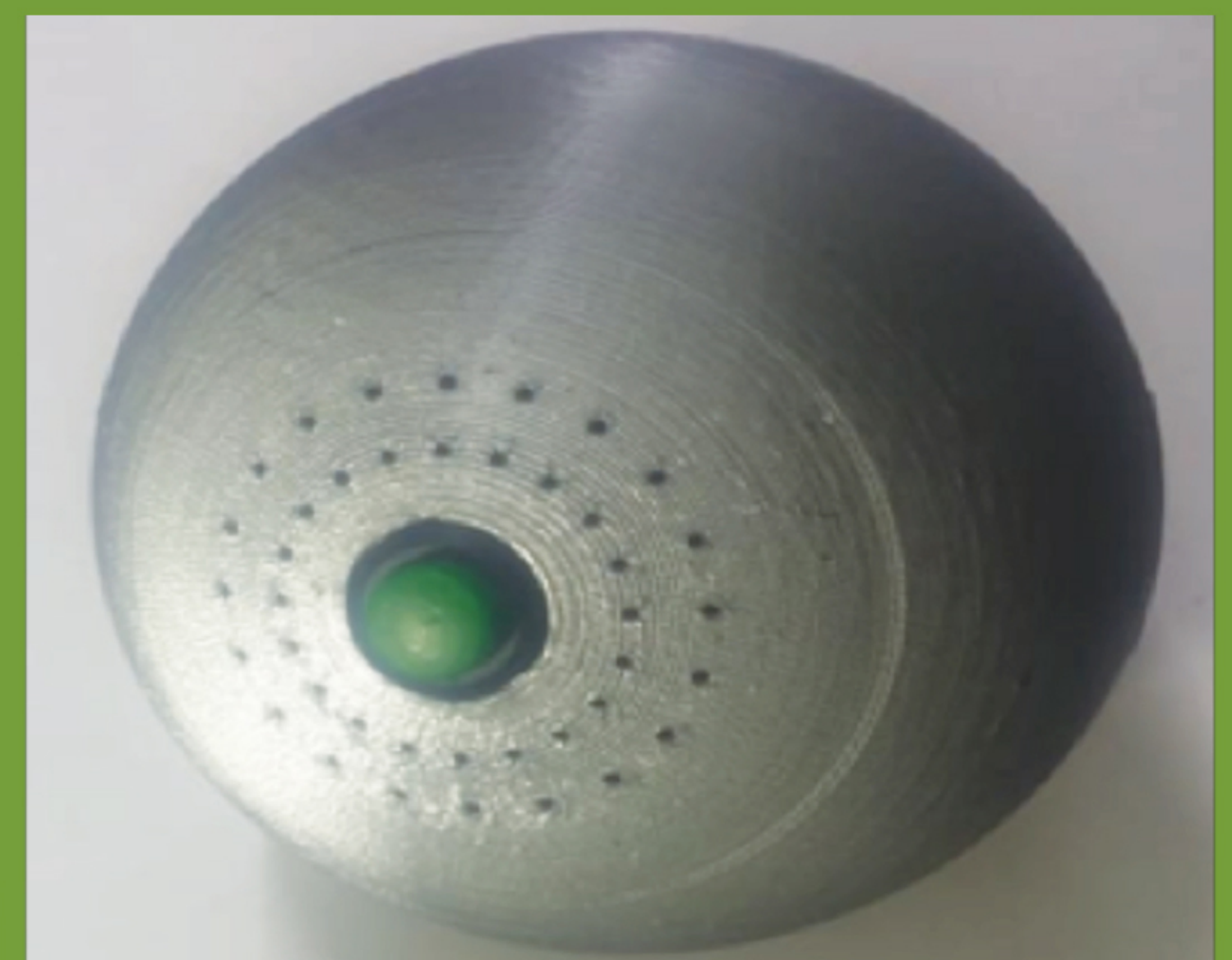
# SMART SENSE DEVICE

## Introduction

Sense ball is a IOT based smart device which will revolutionize the monitoring of storage conditions like Temperature, Humidity, Gas emission, Light Intensity and Acoustics related to multiple type of storages, supply chain as well as local facilities. The smart ball will transmit the data periodically through any kind of IoT network including WiFi, GSM/GPRS/LoRA/Mesh technologies. Data will be subsequently transferred to a web/mobile application for storage, alerts and analytics. On demand and periodical data could be fetched as per user requirement.



**Sense Ball-Inner view**



**Sense Ball-Outer view**

## Features

- Temperature monitoring
- Humidity measurement
- Light intensity measurement
- Gas emissions measures (CO<sub>2</sub> +)
- Acoustic signatures detection

## Contact Us

Corporate Advisory Council (CAC) – NUST

CIE Building, NUST, Sector H-12, Islamabad



gmcac@ric.nust.edu.pk  
+92 51 90856240

## Product Market

- Grain Industry
- Progressive farmers
- Feed storage industry
- Provincial storage departments
- Private Silo manufacturing industry
- Supply chain companies
- Defense



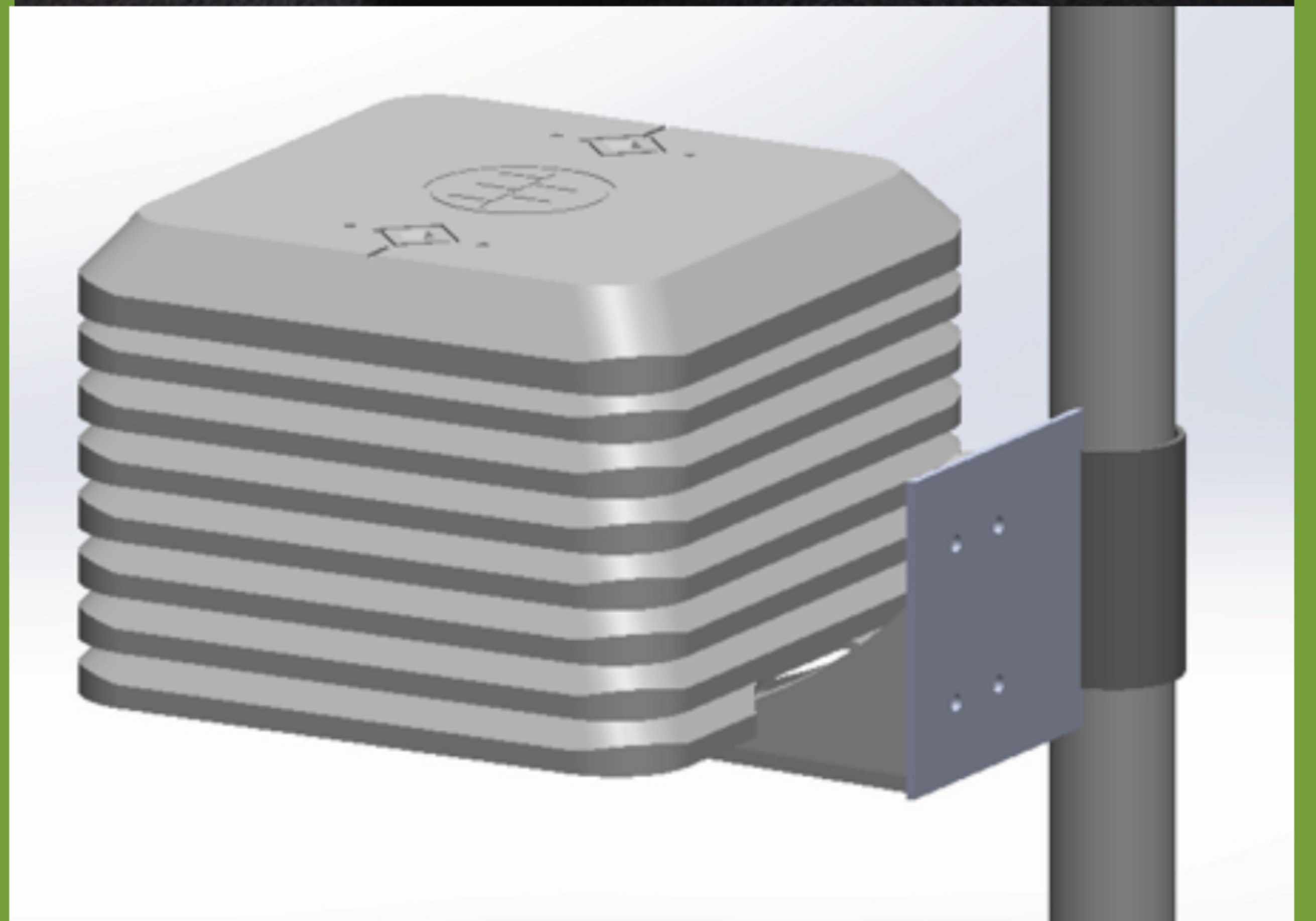
# WEATHER STATION DEVICE

## Introduction

Weather Station device is capable of measuring weather related parameters with accurate results and sends all of its sensor data to a central server for display and analytics. Device is solar powered and does not need any external source to power it up. The data sending interval and standby period of the device can be controlled remotely from the cloud for its more effectiveness and use power efficiently. The real time data measurement can be taken for as low as 10 second interval.

## Features

1. Wind Speed (0-40m/s)
2. Wind Direction (16 Points)
3. Rain Level (0.25mm and up)
4. 2x Atmospheric Pressure (300-1100 hPa)
5. 2x Temperature (-40 - +70 degree Celsius)
6. 2x Humidity (5 - 95% RH)
7. 2x CO2 Level (400 - 25000 ppm)
8. 2x TVOC Levels (0 - 30000 ppb)
9. 2x Light Intensity (0 - 65000 Lux)
10. Real Time Weather Data Monitoring
11. Support of Variety of Wireless Integration Modules (LORA, WIFI, GPRS, MIWI)
12. Cloud Data Monitoring and Device Control
13. Data Send and Sleep Duration can be set remotely from Cloud.(min 10 Seconds)
14. Self Solar powered Device
15. 9 - 12V Input Voltage
16. Rain Proof Body Structure



## Contact Us

Corporate Advisory Council (CAC) – NUST

CIE Building, NUST, Sector H-12, Islamabad



gmcac@ric.nust.edu.pk  
+92 51 90856240

## Product Market

- Weather Station Network
- Agriculture
- Progressive farmers
- Met Office Pakistan
- Airports / Airforce
- Industry
- Navy
- National Disaster Management Authority
- Wild life Management Authority